

# Price List

## Riptide Release – Titles est. February 2026

Lot	Address	Area	Frontage	Price	BAL	Zoning
839	Riptide Road	409	16.9 (cnr)	\$304,000	29	RMD25
850	Triton Lane	371	12.5 (cnr)	\$299,000	LOW	RMD40
851	Triton Lane	300	10	\$269,000	LOW	RMD40
852	Triton Lane	300	10	\$269,000	LOW	RMD40
853	Triton Lane	300	10	\$269,000	LOW	RMD40
854	Triton Lane	330	11 (cnr)	\$289,000	LOW	RMD40
855	Cliffside Way	369	15 (cnr)	<b>HOLD – \$296,000</b>	LOW	RMD25
857	Cliffside Way	313	12.5	<b>HOLD – \$279,000</b>	LOW	RMD25
858	Cliffside Way	312	12.5	<b>HOLD – \$279,000</b>	LOW	RMD25
859	Cliffside Way	375	15	<b>HOLD – \$299,000</b>	LOW	RMD25
862	Cliffside Way	313	12.5	<b>SOLD</b>	12.5	RMD25
865	Cliffside Way	332	13.8 (cnr)	<b>HOLD – \$279,000</b>	12.5	RMD25
875	Triton Lane	330	11 (cnr)	<b>SOLD</b>	LOW	RMD40
878	Triton Lane	300	10	<b>HOLD – \$269,000</b>	LOW	RMD40
879	Triton Lane	370	12.5 (cnr)	<b>SOLD</b>	12.5	RMD40
902	Fleet Street	510	17	<b>HOLD – \$345,000</b>	12.5	RMD25
903	Fleet Street	593	24.3 (cnr)	<b>HOLD – \$379,000</b>	12.5	RMD25
904	Riptide Road	523	15.7 (cnr)	\$349,000	19*	RMD25
905	Riptide Road	444	14.8	\$320,000	19*	RMD25
906	Riptide Road	450	15	\$322,000	19*	RMD25
907	Riptide Road	450	15	\$322,000	19*	RMD25
908	Riptide Road	450	15	\$322,000	19*	RMD25
912	Riptide Road	450	15	<b>HOLD – \$319,000</b>	19*	RMD25
913	Riptide Road	450	15	<b>HOLD – \$319,000</b>	19*	RMD25
917	Riptide Road	460	16.7 (cnr)	<b>SOLD</b>	19*	RMD25

**All lots include front landscaping and boundary fencing.**

\$2,000 Deposit required at contract signing. Pricing subject to change without notice.

Bushfire Attack Level Rating may apply to some lots. Pricing and details correct as of 26th August 2025.

Titled = Ready to build straight after settlement! \* = BAL subject to additional setback requirements



**For more information contact  
Damyn Strang on 0434 070 654**

**Land Sales Office: 5 Constellation Entrance, Two Rocks  
(08) 6285 8155 | [atlantisbeach.com.au](http://atlantisbeach.com.au)**



# PRICE LIST

*Anchorage*  
By Atlantis Beach

## Anchorage – Titles Est. November 2025

Lot	Address	Area	Frontage	Price	BAL	Zoning
649	Foam Way	800	20	\$450,000	LOW	R15
654	Foam Way	1114	15.7	\$516,000	12.5	R15
657	Quay Street	728	20 (cnr)	\$399,000	29	R15
658	Quay Street	809	20	<b>SOLD</b>	29	R15
663	Foam Way	987	23.5	<b>SOLD</b>	LOW	R15
664	Foam Way	987	23.5	<b>SOLD</b>	LOW	R15
665	Fortescue Boulevard	717	22 (cnr)	<b>SOLD</b>	LOW	R15
666	Fortescue Boulevard	721	20	<b>SOLD</b>	LOW	R15
667	Fortescue Boulevard	774	20	\$415,000	12.5	R15
668	Fortescue Boulevard	826	20	<b>SOLD</b>	12.5	R15
669	Quay Street	940	23.5	<b>SOLD</b>	LOW	R15
670	Quay Street	940	23.5	\$480,000	LOW	R15
673	Quay Street	903	26	\$456,000	12.5	R15
674	Quay Street	860	20	<b>SOLD</b>	12.5	R15
675	Quay Street	860	20	<b>SOLD</b>	12.5	R15
676	Quay Street	989	23	<b>SOLD</b>	12.5	R15
677	Quay Street	860	20	<b>SOLD</b>	12.5	R15
678	Quay Street	860	20	<b>SOLD</b>	12.5	R15
679	Fortescue Boulevard	736	23	<b>SOLD</b>	12.5	R15
680	Fortescue Boulevard	759	20.1	<b>SOLD</b>	19	R15
681	Wharf Street	878	30.8	<b>SOLD</b>	29	R15

**All lots include front landscaping and boundary fencing.**

\$2,000 Deposit required at contract signing. Pricing subject to change without notice.

Bushfire Attack Level Rating may apply to some lots. Pricing and details correct as of 26th August 2025.

Titled = Ready to build straight after settlement! \* = BAL subject to additional setback requirements

For more information contact Damyn Strang on  
0434 070 654 or visit [atlantisbeach.com.au/anchorage](https://atlantisbeach.com.au/anchorage)





## Legend

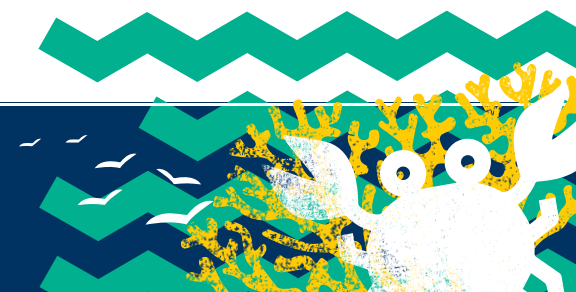
	Riptide Release		Existing Residential
	Future Release		Future Residential
	GARAGE LOCATIONS		WATER SERVICES
	RETAINING WALLS/STAIRS		DRAINAGE SERVICES
	FOOTPATHS		POWER DOME & STREET LIGHTS
	LOT LEVEL		TRANSFORMER SITE
	ROAD LEVEL		NBN PIT SITE
	BAL 12.5		NO VEHICLE ACCESS
	BAL 19		
	BAL 29		HOLD
			SOLD

## Location Plan



The service and engineering information shown is from design drawings and should not be construed as being the "As-Constructed" details. It is acknowledged that the dimensions and areas, as well as location of services and the existence and width of easements are subject to change in accordance with the requirements of any relevant Authority. The particulars of this plan are supplied for formation only presenting the facts at the time of printing and may change. The particulars shall not be taken as a representation in any respect on the Vendor or its Agent. Authorities should be consulted in relation to any limitations or requirements as building restrictions may apply.

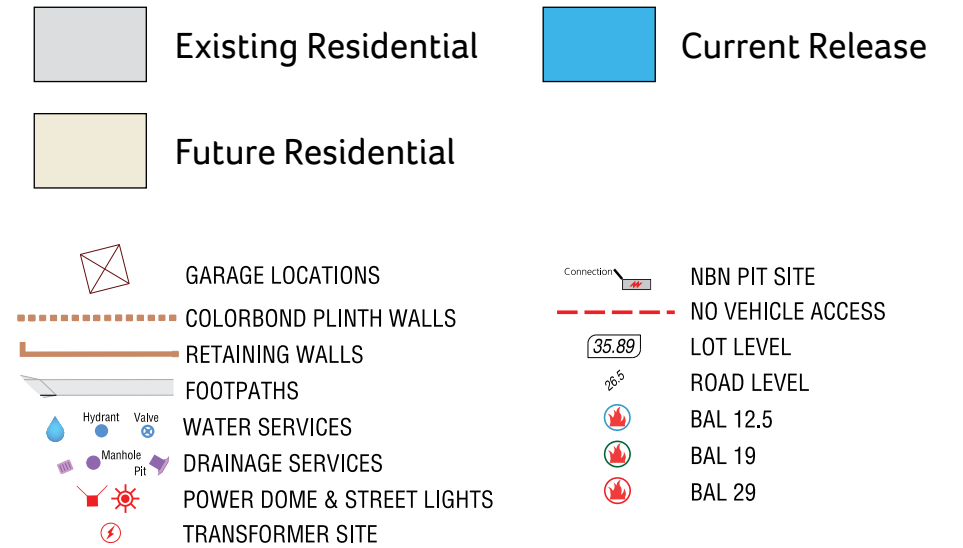
Our Ref: 11928 Date: May 2025







## Legend



## Location Plan



The service and engineering information shown is from design drawings and should not be construed as being the "As-Constructed" details. It is acknowledged that the dimensions and areas, as well as location of services and the existence and width of easements are subject to change in accordance with the requirements of any relevant Authority. The particulars of this plan are supplied for formation only presenting the facts at the time of printing and may change. The particulars shall not be taken as a representation in any respect on the Vendor or its Agent. Authorities should be consulted in relation to any limitations or requirements as building restrictions may apply.

Our Ref: 11928 Date: April 2025

